

- ① O.C.R No. 9425 Loomis–Oroville Rd.
M.P. 35.36 Rt.
(1.6 Mi. from SR 97 in Oroville)

Remove Two Large Rocks*
- ② O.C.R No. 9455
Aeneas Valley Rd.
M.P. 2.6 Rt.
Remove Two Pine Trees
(± 90' & ± 120' Ht.)*
- ③ O.C.R No. 9229
Conconully Rd.
M.P. 2.76 Rt.
Remove Large Tree Stump*
- ④ O.C.R No. 9213
Spring Coulee Rd.
M.P. 1.44 Rt.
Remove One Pine Tree (± 60' Ht.)*

* See Appendix A in Special Provisions for Location Photos.

TABLE of CONTENTS

SHEET NO.	TITLE
1	TABLE OF CONTENTS \ LOCATION MAP
2	TRAFFIC CONTROL PLAN

OKANOGAN COUNTY

PROJECT LOCATION MAP

NOT TO SCALE

Designed by: _____ Date: _____
 Drawn by: _____ Date: _____
 Checked by: _____ Date: _____
 Fed. Funct. Class: _____
 Terrain Type: _____
 Design Year: _____
 Design Year ADT.: _____
 Design Speed: _____

Fed. Aid Proj. No. HSIP - 000S(483)
 Contract No. TA - 6338
 R.A.P. Project No. N/A



Okanogan County
 Department of Public Works

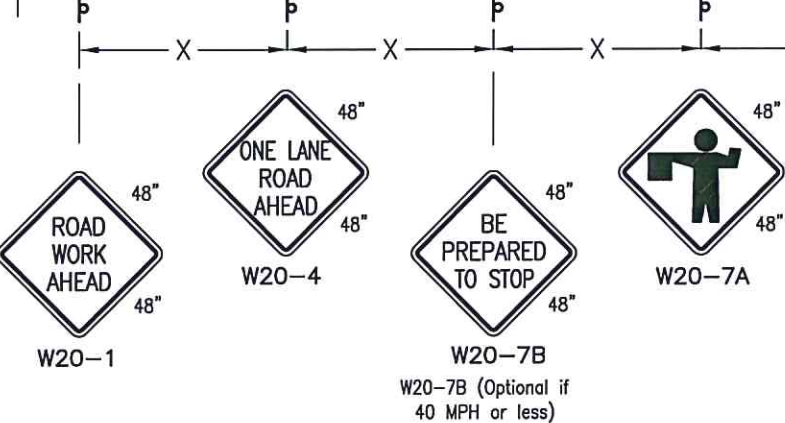
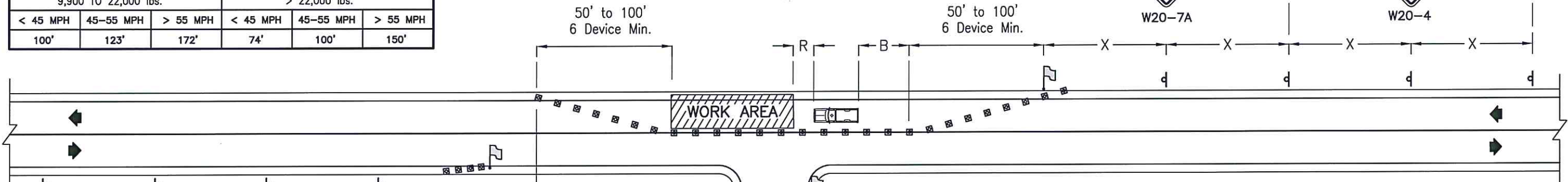
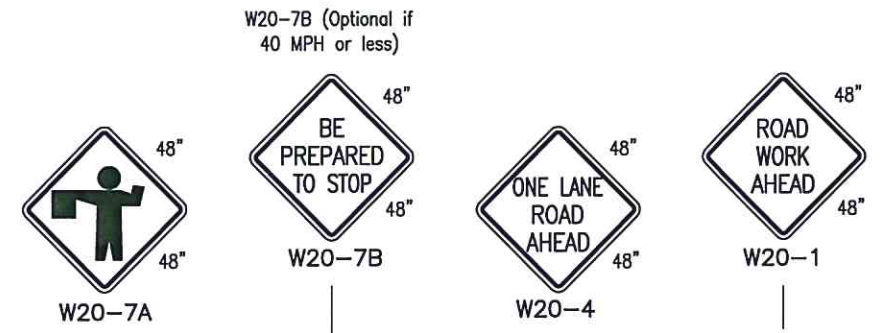
1234-A 2nd Ave. S. 509-422-7300
 Okanogan, Washington 98840

COUNTY WIDE ROADSIDE
 HAZARD REMOVAL

TABLE OF CONTENTS \ LOCATION MAP

SHEET
1
 of
2

BUFFER DATA										
LONGITUDINAL BUFFER SPACE = B										
SPEED (MPH)	25	30	35	40	45	50	55	60	65	70
LENGTH (FEET)	155	200	250	305	360	425	495	570	645	730
TRANSPORTATION ATTENUATOR ROLL AHEAD DISTANCE = R										
HOST VEHICLE WEIGHT 9,900 TO 22,000 lbs.					HOST VEHICLE WEIGHT > 22,000 lbs.					
< 45 MPH	45-55 MPH	> 55 MPH	< 45 MPH	45-55 MPH	> 55 MPH	< 45 MPH	45-55 MPH	> 55 MPH	< 45 MPH	45-55 MPH
100'	123'	172'	74'	100'	150'	100'	123'	172'	74'	100'



CHANNELIZING DEVICE SPACING (FT)		
MPH	Taper	Tangent
50/65	10 to 20	80
35/45	10 to 20	60
25/30	10 to 20	40

SIGN SPACING = X (1)		
Rural Roads	45/55 MPH	500'±
Rural Roads & Urban Arterials	35/40 MPH	350'±
Rural Roads, Urban Arterials, Residential & Business Districts	25/30 MPH	200'± (2)

(1) All spacing may be adjusted to accommodate intersections and driveways.
(2) This spacing may be reduced in urban areas to fit roadway conditions.

- LEGEND**
- Flagger Station
 - Temporary Sign Location
 - Channelizing Devices
 - Protective Vehicle

- GENERAL NOTES**
- Channelization devices shall consist of traffic cones or tubular markers meeting the requirements of MUTCD 6f-55 cones design. They are to be extended to a point where they are visible to approaching traffic and shall clearly designate the route through the work area.
 - All signs shall have orange background with black legend unless otherwise noted.
 - This plan is for daylight use only.

ONE-LANE, TWO-WAY TRAFFIC CONTROL WITH FLAGGERS
NOT TO SCALE

Designed by:	Date:
Drawn by:	Date:
Checked by:	Date:
Fed. Funct. Class:	
Terrain Type:	
Design Year:	
Design Year ADT.:	
Design Speed:	

Fed. Aid Proj. No.	HSIP - 000S(483)
Contract No.	TA - 6338
R.A.P. Project No.	N/A

4/29/19
Approval Date

Okanogan County
Department of Public Works
1234-A 2nd Ave. S. 509-422-7300
Okanogan, Washington 98840

COUNTY WIDE ROADSIDE HAZARD REMOVAL
TRAFFIC CONTROL PLAN

SHEET
2
of
2

C:\Users\jrebus\Desktop\Current dwgs\2018 County Wide Roadside Hazard Removal\map plans.dwg